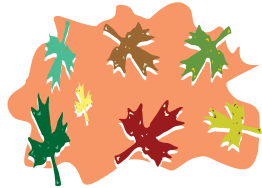


What's in the bin?

Look at the compost and imagine what the original materials that went into the compost might have been. Circle the items below.



Leaves



Fungi



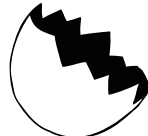
Newspaper



Soil



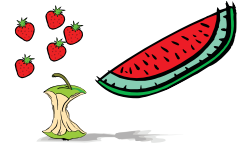
Dragon



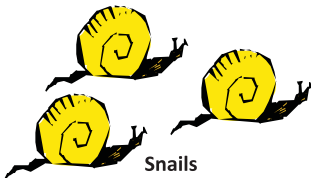
Eggshells



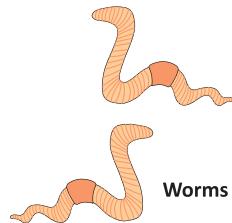
Chair



Fruit



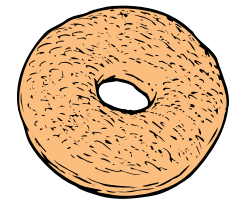
Snails



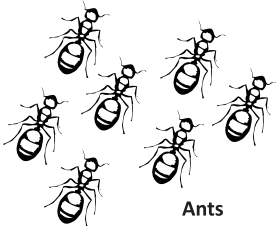
Worms



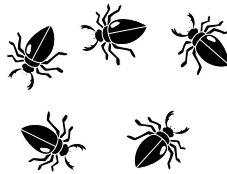
Vegetables



Bagel



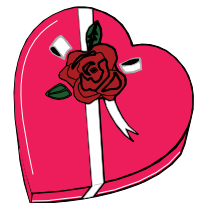
Ants



Beetles



Hat



Candy



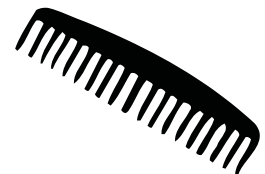
Clock



Flowers



Grass clippings



Comb